



Fielding Road, London, W4 1DB

Guide Price £1,195,000

**WHITMAN & CO.**

SALES · LETTINGS · COMMERCIAL

- Rarely available Edwardian house
- Three beds/two baths
- Sought after residential street
- Fabulous 50' garden with rear access
- Sunny south facing 14'7" reception room
- No onward chain

Tenure - Freehold  
Local Authority - Ealing  
Council Tax - Band F

## THE PROPERTY

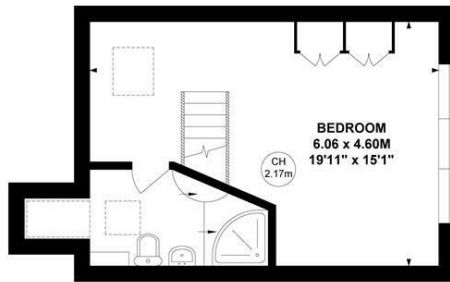
A rarely available Edwardian terraced house with a fabulous 50' garden located on this sought after residential road on the borders of the Bedford Park conservation area. The house has been extended into the loft and on the ground floor and has been well maintained whilst also offering the incoming purchaser the opportunity to extend and remodel subject to the necessary consents. The accommodation comprises a sunny south facing 14'7" reception room with bay window, a full width dining room, a fitted kitchen, a great size private garden with rear access, 15'2" main bedroom with bay window and fitted wardrobes, a second bedroom, family bathroom, spacious loft bedroom with lovely views and ensuite shower room. Fielding Road is a quiet tree-lined street offering easy access to Chiswick High Road's shops, cafes and restaurants. Transport links include Turnham Green station, local bus routes and the A4/M4 for routes in and out of London. No onward chain.



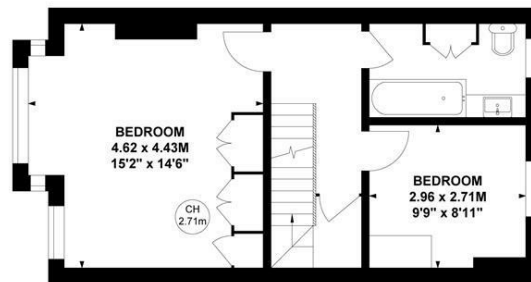
## Fielding Road, W4

Approximate Gross Internal Area  
120.39 sq m / 1296 sq ft

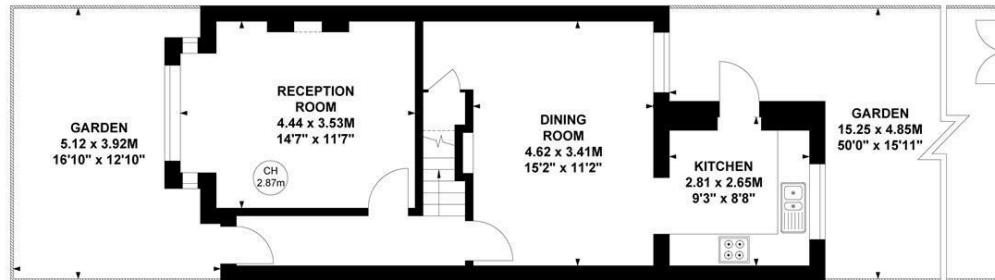
Key :  
CH - Ceiling Height



Second Floor



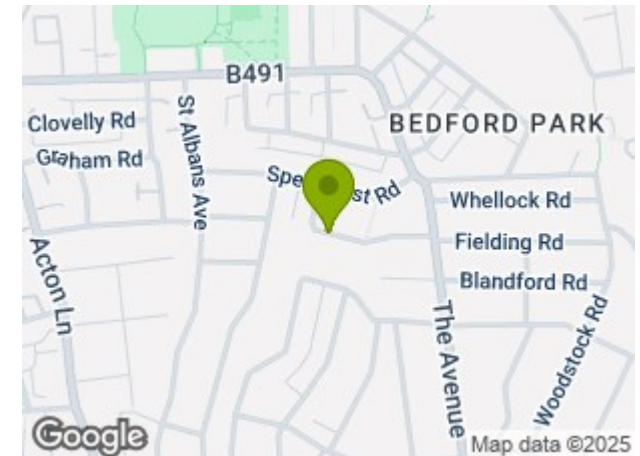
First Floor



Ground Floor

Not to scale, for guidance only and must not be relied upon as a statement of fact.  
All measurements and areas are approximate only

## SITUATION



5-7 Turnham Green Terrace, Chiswick, London, W4 1RG

Tel 020 8747 8800

E-mail [sales@whitmanandco.com](mailto:sales@whitmanandco.com)

Website [www.whitmanandco.com](http://www.whitmanandco.com)